

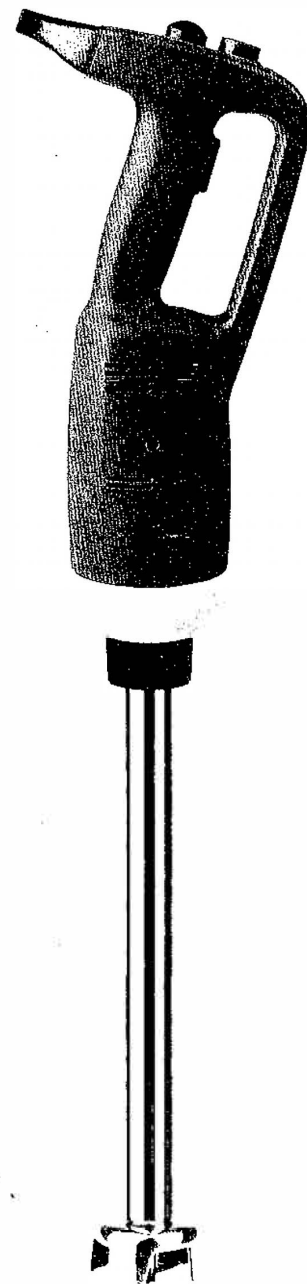
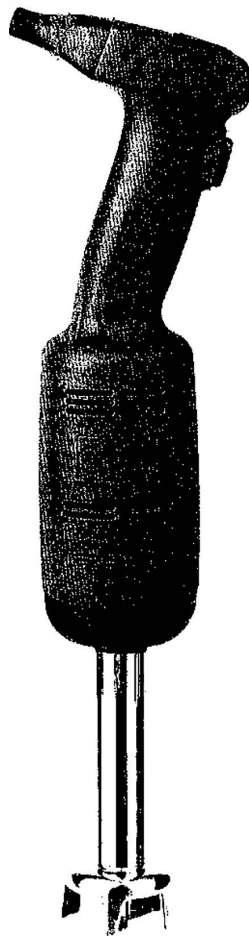
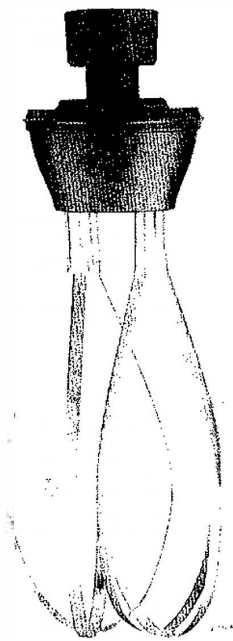


**CLIMA
HOSTELERÍA**

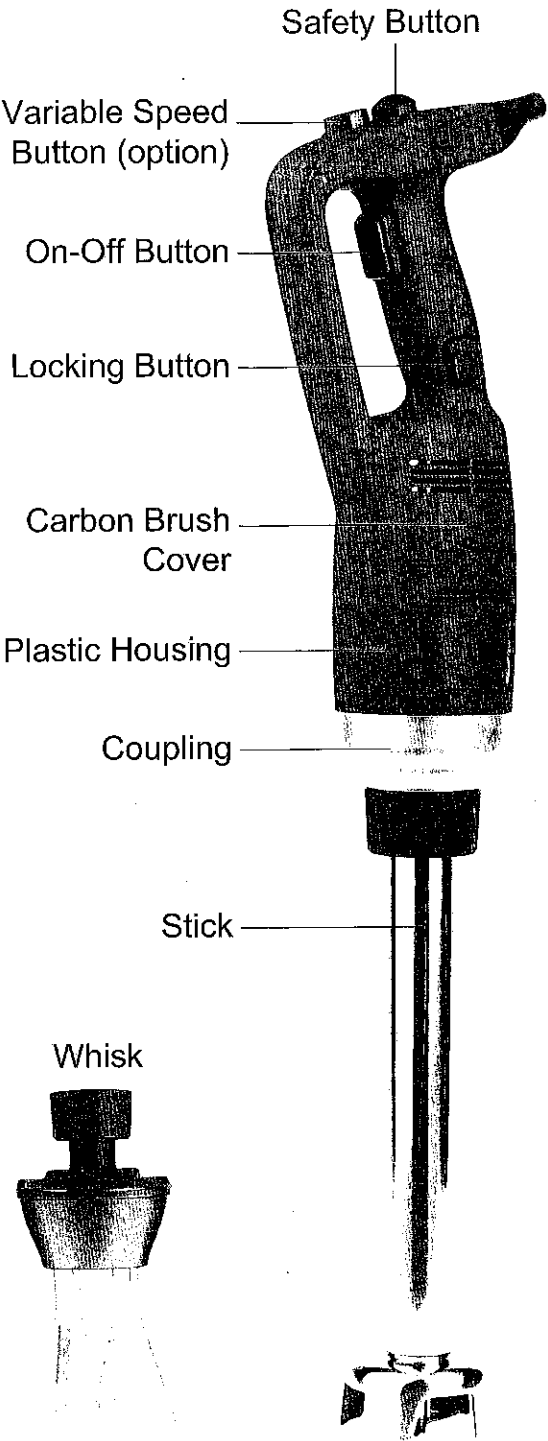
IMMERSION BLENDER

ORIGINAL INSTRUCTION

**IB220MF, IB350CF, IB500LF / IB220MV, IB350CV, IB500LV
IB750LF / IB750LV**

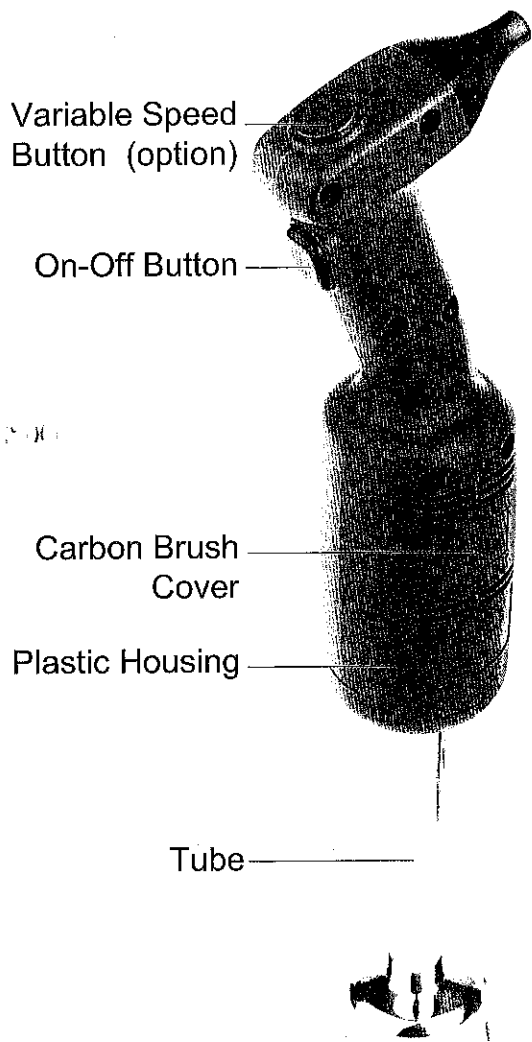


PRODUCT DESCRIPTION



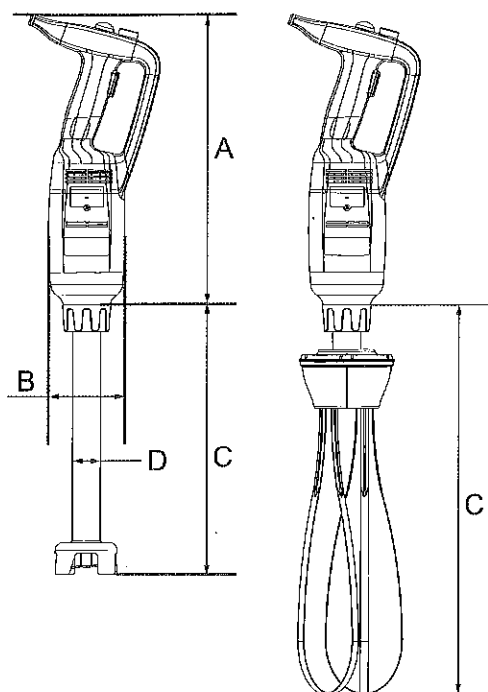
IB350CF / IB350CV
IB500LF / IB500LV

WIK250



IB220MF / IB220MV

MAIN TECHNICAL PARAMETERS



Model	Voltage Supply	Power	Speed	Body Weight	A (Length, mm)	B (Diameter, mm)
IB220MF	100~120V/60Hz 220~240V/50Hz	220W	20000RPM	1.15KGS	304mm	Ø 75 mm
IB220MV	100~120V/60Hz 220~240V/50Hz	220W	4000~20000RPM	1.15KGS	304 mm	Ø75 mm
IB350CF	100~120V/60Hz 220~240V/50Hz	350W	16000RPM	1.76KGS	359 mm	Ø 91 mm
IB350CV	100~120V/60Hz 220~240V/50Hz	350W	4000~16000RPM	1.76KGS	359 mm	Ø 91 mm
IB500LF	100~120V/60Hz 220~240V/50Hz	500W	16000RPM	1.98KGS	359 mm	Ø 91 mm
IB500LV	100~120V/60Hz 220~240V/50Hz	500W	4000~16000RPM	1.98KGS	359 mm	Ø 91 mm
IB750LF	100~120V/60Hz 220~240V/50Hz	750W	20000RPM	2.81KGS	396 mm	Ø 116 mm
IB750LV	100~120V/60Hz 220~240V/50Hz	750W	8000~20000RPM	2.81KGS	396 mm	Ø 116 mm

NOTE:

Above machine don't include any following attachments. Below chart you can find available attachments for your choice.

Model	Weight	C Length(mm)	D Diameter(mm)	Description
WIK185	0.81KGS	185 mm	/	SUIT FOR MACHINE IB220MV
BLD160	0.46KGS	160 mm	Ø 25mm	SUIT FOR MACHINE IB220MF/IB220MV
WIK250	0.86KGS	250 mm	/	SUIT FOR MACHINE IB350CV / IB500LV / IB750LV

BLD200	0.69KGS	200 mm	Ø 35 mm	SUIT FOR MACHINE IB350CV / IB500LV / IB750LV
BLD250	0.82KGS	250 mm	Ø 35 mm	
BLD300	1.00KGS	300 mm	Ø 35 mm	
BLD350	1.10KGS	350 mm	Ø 35 mm	
BLD400	1.28KGS	400 mm	Ø 35 mm	
BLD450	1.45KGS	450 mm	Ø 35 mm	
BLD500	1.56KGS	500 mm	Ø 35 mm	
BLD550	1.74KGS	550 mm	Ø 35 mm	SUIT FOR MACHINE IB750LV

INTRODUCTION

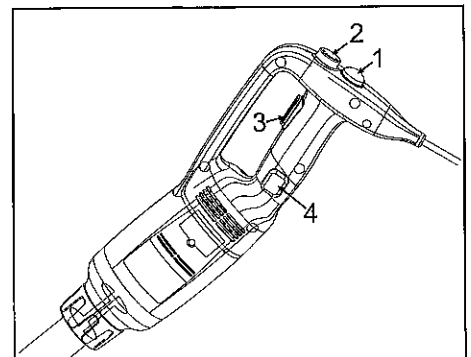
1. We advise you to carefully read the instruction included in this package.
2. If you wish to make the best use of the Immersion Blender all its possibilities, you must be thoroughly familiar with its performance and operating features.
3. Maintenance requires just a few simple operations that may be carried out by the operator.
4. To ensure a long life and minimize operating costs, you should carefully follow the rules given in this manual instruction.
5. The manufacturer has designed the Immersion Blender to ensure safe operating conditions:
Exclusion or removal of the safety features installed by the manufacturer will seriously undermine the guaranteed safety conditions.
6. To ensure these conditions you must also fully comply with the instructions regarding the installation and power supply of the Immersion Blender.
7. The Immersion Blender must be installed in a work environment free of corrosive agents.
8. The installation site must not be subject to explosion.
9. Use only original SPARE PARTS.
10. This manual instruction is an integral part of the Immersion Blender and must be kept in a safe place. The features, information and drawings published in this manual instruction are the exclusive property of the manufacturer company.
11. The appliance function makes it possible to carry out all types of processing in the minimum of time with below recommended food: thick vegetable, soups, mashed potatoes, creams, batters, mayonnaise, almonds pulp, cheese creams and what other food like that.

OPERATING INSTRUCTIONS:

CAUTION: Before connecting your units to the power supply, make sure the machine's electrical specifications, printed in the unit's rating plate, meet to your local power.

STARTING AND STOPPING THE BLENDER

1. Check that the on-off button (No.3) is in the released position.
2. Connect the appliance to the power supply.
3. Insert the stick or whisk into the appliance.
4. Press and hold down the safety button (No.1) if the appliance has.
5. Press the on-off button (No.3), and the blender will start up.
6. To stop the blender, release the on-off button (No.1) and then the safety button (No.1) will release automatically.



CONTINUOUS OPERATION:

Follow steps 1 to 5 above, then:

6. While the on-off button (No.3) is in the depressed position, press the locking button (No.4).
7. Release the on-off button (No.3), and the appliance will function continuously.
8. To stop the appliance, press and release the on-off button (No.3).

VARIABLE-SPEED OPERATION

Follow steps 1 to 5 above, then:

9. Change the speed of the motor by turning the variable speed button (No.2) towards the maximum or minimum as required. **It is advisable to start a low speed when using the whisk.** With the self-regulating speed system, once you have selected a speed, it will remain constant, even if the consistency of your mixture changes.

Working position:

Blender function: For greater control, we recommend that you hold the blender by the handle and the bottom of the motor unit. Furthermore, we recommend that you tilt the blender at a slight angle to prevent the bell from touching the bottom of the container. Always make sure that the bell is sufficiently immersed to avoid splashing and that the air vents of the motor unit does not come into contact with any liquid. For optimum efficiency, two thirds of the stick should be immersed in the preparation.

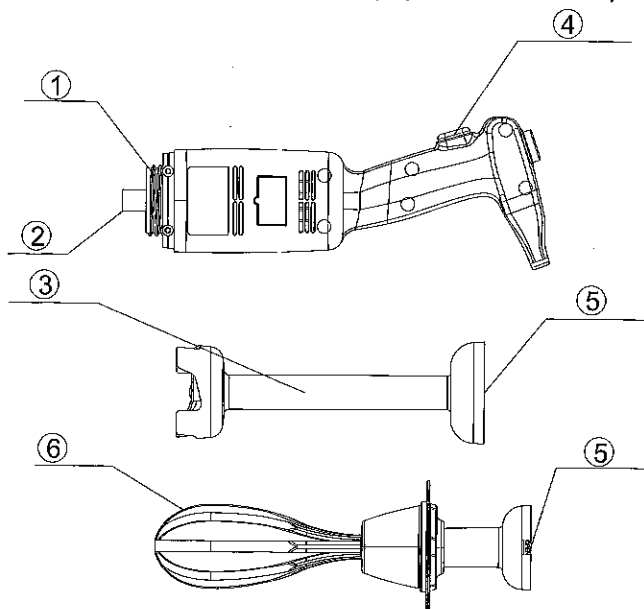
Whisk function: You can also hold the appliance by the handle with one hand, leaving the other hand free to hold the bowl, if necessary. While you process the preparation, we recommend that you move the whisk around in the bowl, in order to ensure that the mixture is completely homogeneous. We strongly advise you to keep the whisk from touching the sides of the bowl. For Maximum efficiency, at least one-fifth of the whisk length should be immersed. But never immerse the whisk holder into the preparation.

ASSEMBLING / DISMANTLING:

The assembly / disassembly operations of every device of the appliance are performed with the appliance stop and with the plug disconnected from the socket.

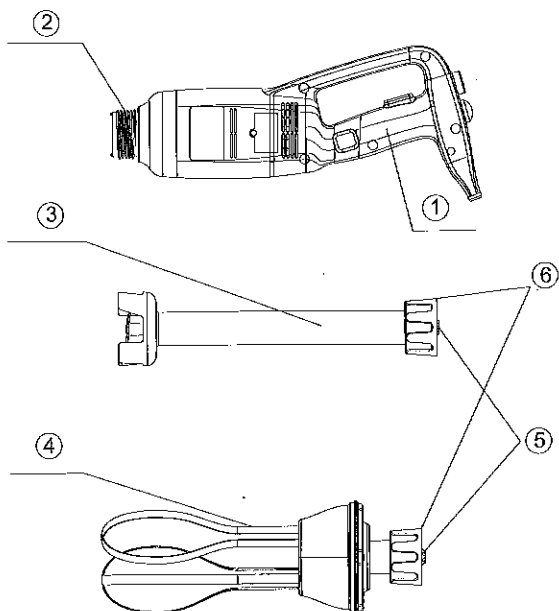
Assembly Model IB220MF and IB220MV:

1. Align and insert the coupling (5) of the stick (3) or whisk (6) in the clutch (2) of the machine body (1).
2. Screw the stick (3) or whisk (3) up to fasten it firmly to the machine body (1).



Assembly Model IB350CF, IB350CV, IB500LF, IB500LV and IB750LF, IB750LV:

1. Align and insert the coupling (5) of stick (3) or whisk (4) in the clutch (2) of the machine body (1). Be sure the concave side of coupling must catch into the convex of the clutch.
2. Screw the nut (6) up to fasten them firmly to the machine body (1).



The disassembly activities perform following in a backgrounds way the assembly phases previously described.

CLEANING INSTRUCTIONS:

As a precaution, always unplug your appliance before cleaning it.

1. After using the Immersion Blender and Whisk in a hot preparation, cool the bottom of the stick in cold water before dismantling the bell from the stick. After completion of preparation, clean immediately to prevent food from sticking to surfaces.
2. Never put the motor unit and its handle in water, clean them with a damp cloth or a sponge.
3. Blender Stick and Bell cleaning: Place the stick and bell into a suitable container with water and switch on for a few seconds to clean the bell and stick. **WARNING:** Always dry the blades thoroughly after cleaning to avoid spotting.
4. Never immerse the whisk holder in water, clean it with a slightly damp cloth or sponge.
5. It is vital to clean it thoroughly between each job using a detergent or disinfectant, but never use pure bleach. For plastic parts, do not use detergents that are too alkaline.

Troubleshooting

If it is due to a power cut if the appliance had been unplugged, release the on-off button (No.3), check the power supply and then restart the appliance.

If it is due to overheating of the machine, release the on-off button (CB), and then unplug the appliance, wait a few minutes for the motor to cool down and the thermal safety mechanism to be reset, and then restart the appliance.

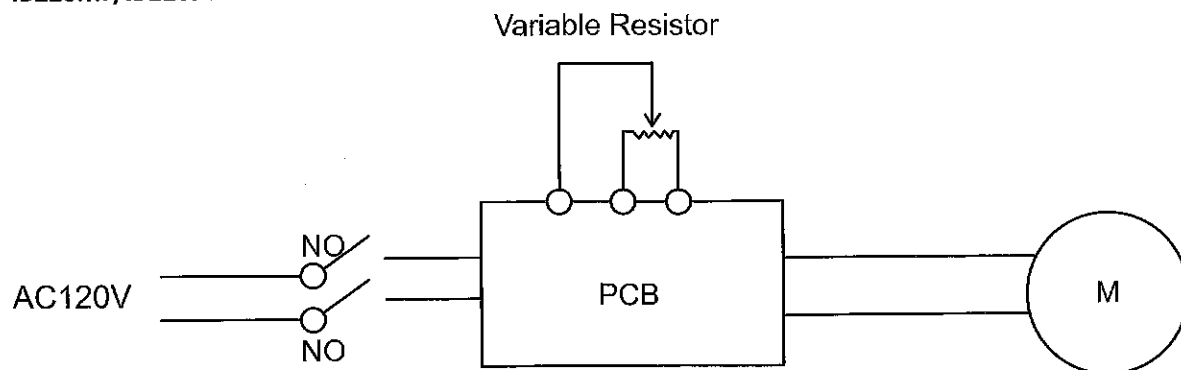
If you cannot locate the cause of the problem: release the on-off button (CB), unplug the appliance, check below:

1. the plug
2. that the blades are free to rotate in the bell,
3. that state of the power cord,
4. the drive shaft is free to rotate. To do this, remove the bell and test the rotation of the end of drive shaft manually.

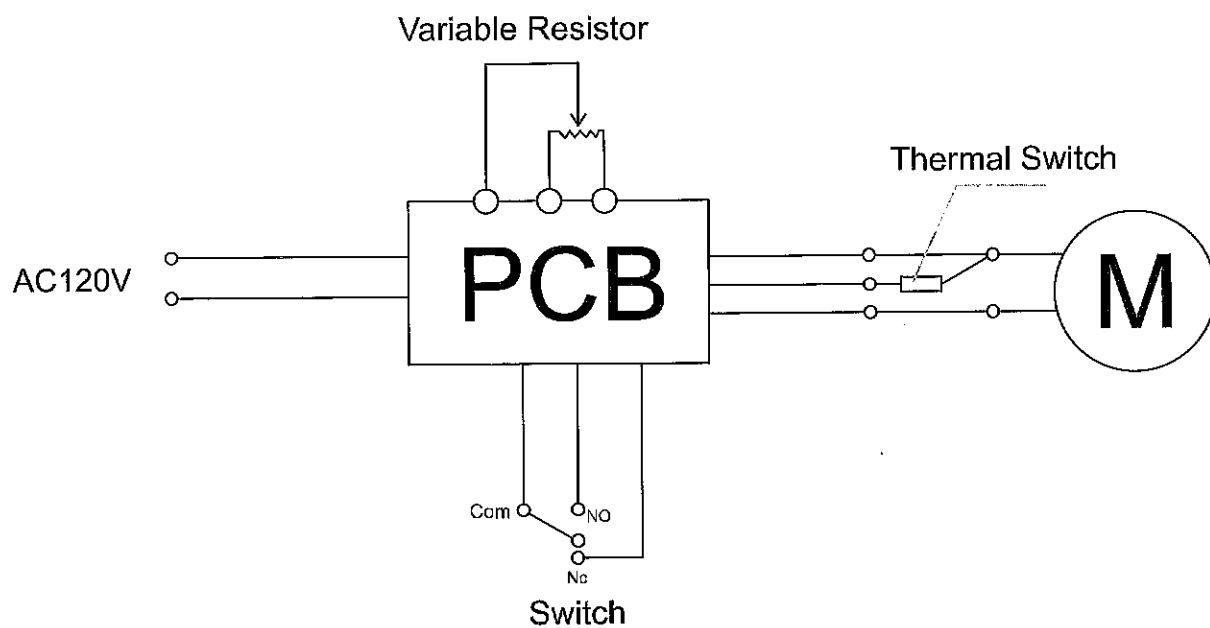
If a malfunction occurs which is not on our list of possible faults, consult your retailer or return the appliance to the after-sales services.

Circuit diagram

IB220MF/IB220MV

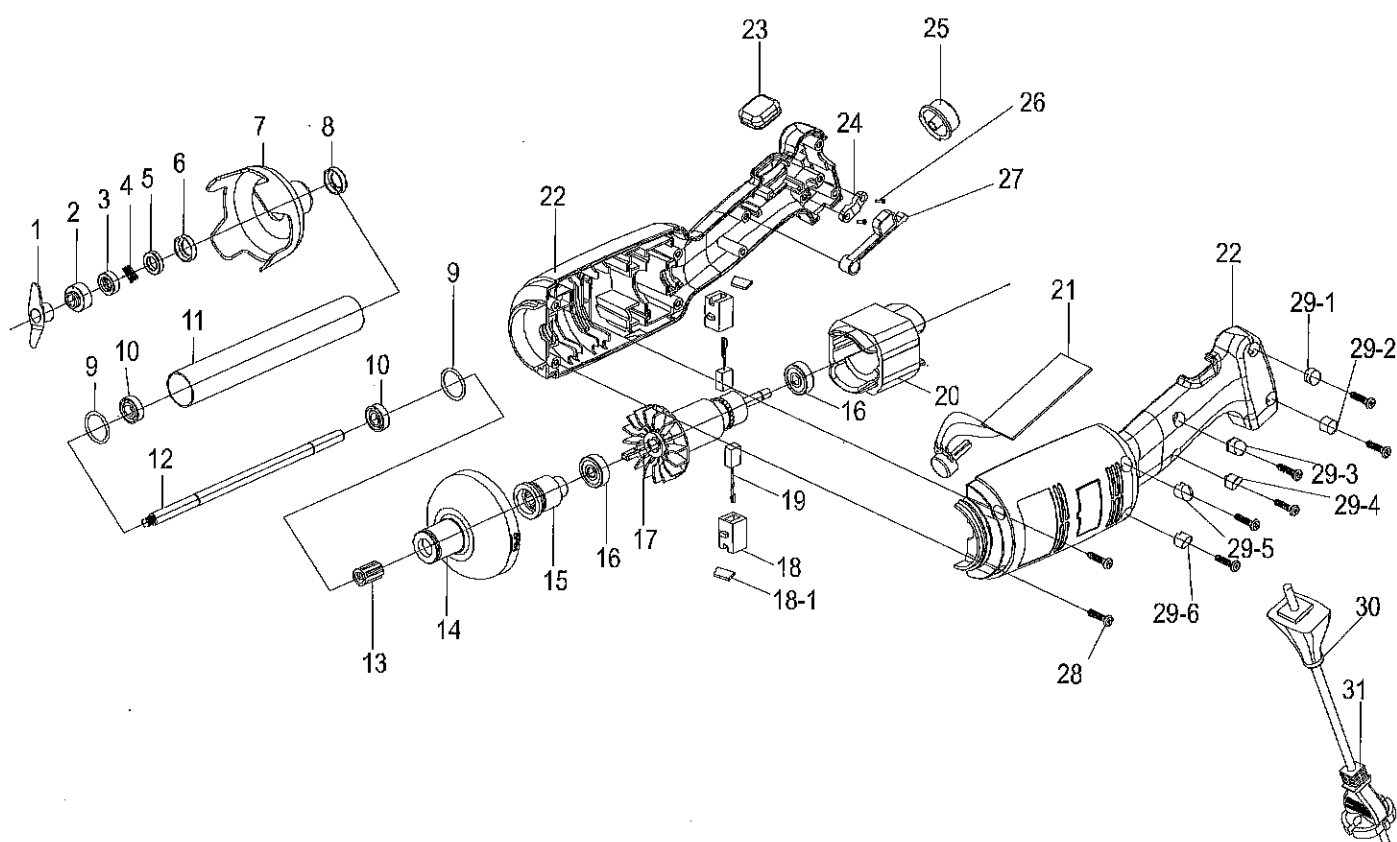


IB350CF / IB350CV / IB500LF / IB500LV / IB750LF / IB750LV



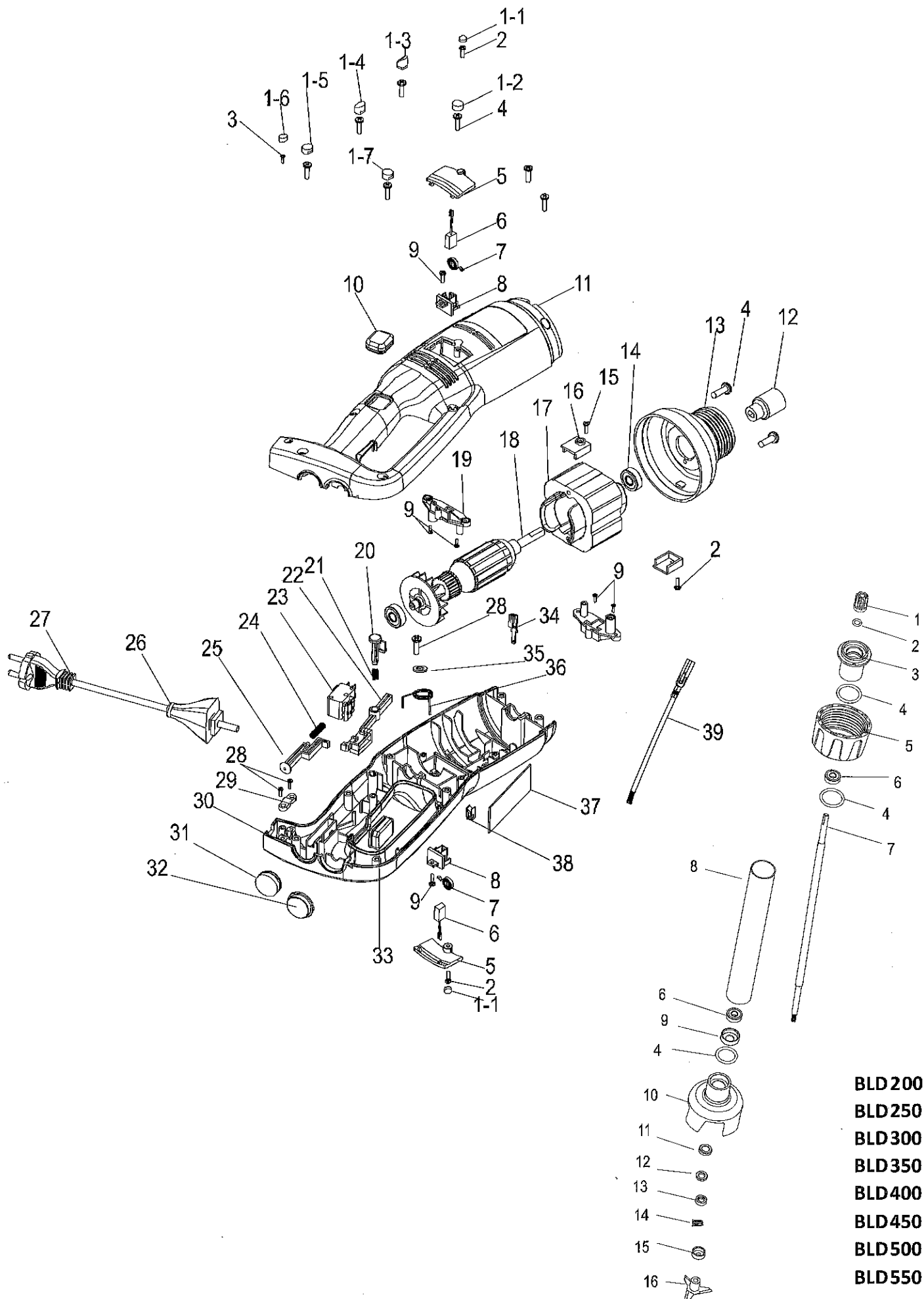
Exploded view

IB220MF/IB220MV + BLD160



IB220MF/IB220MV + BLD160 SPARE PARTS LIST

Part No.	Part Name	Part No.	Part Name	Part No.	Part Name
1	Blade	14	Plastic head housing	26	Pressing board screw
2	Convex ring	15	Spline sleeve	27	Switch osculant staff
3	Graphite ring spring	16	Bearing	28	Housing screw
4	Graphite ring	17	Rotor	29-1	Screw plunger 28-1
5	Ceramic ring	20	Stator	29-2	Screw plunger 28-2
6	Ceramic ring sleeve	18	Brush barrel	29-3	Screw plunger 28-3
7	Knife protector	18-1	Brush cover	29-4	Screw plunger 28-4
8	Bearing sleeve	19	Brush	29-5	Screw plunger 28-5
9	Seal ring	21	PCB Speed control board	29-6	Screw plunger 28-6
10	W688Z Bearing	22	Left and right housing	30	Cable sheath
11	S/S tube	23	Rubber interlocking protector	31	Power cord
12	Output axis	24	Pressing board		
13	Spline	25	Speed control key		



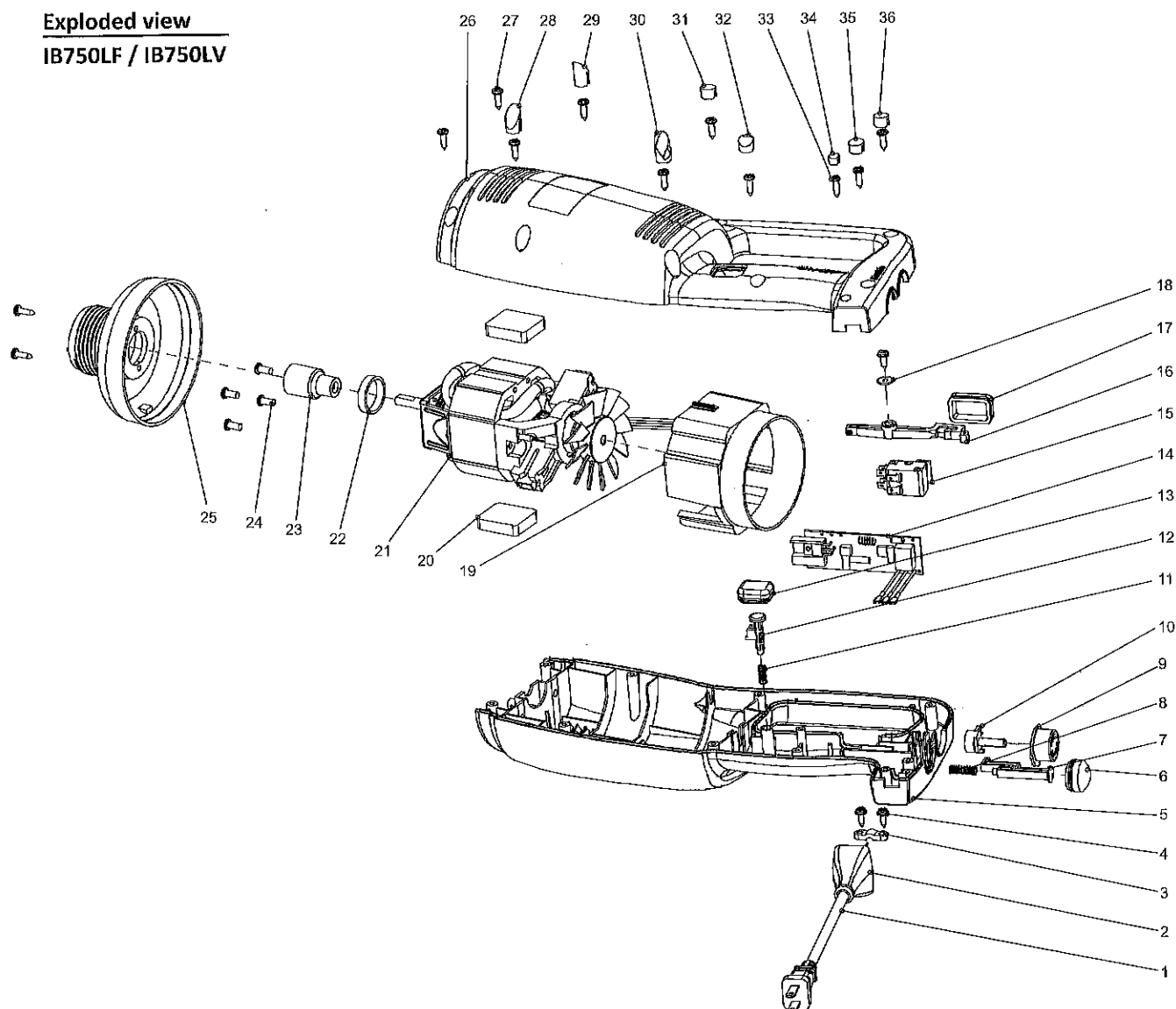
IB350CF, IB350CV, IB500LF, IB500LV SPARE PARTS LIST

Part No.	Part Name	Part No.	Part Name	Part No.	Part Name
1-1	Screw plunger 1	11	Left housing	25	Push bolt
1-2	Screw plunger 2	30	Right housing	26	Cable sheath
1-3	Screw plunger 3	12	Spline sleeve	27	Power cord
1-4	Screw plunger 4	13	Aluminium head	28	Pressing board screw
1-5	Screw plunger 5	14	608 Bearing	29	Pressing board
1-6	Screw plunger 6	15	Motor fixed board Screw	31	Rubber push sheath
2	3*12 CB Screw	16	Motor fixed board	32	Speed control key
3	3*15 CB Screw	17	IB500W Stator	33	Switch sheath
4	M4*1 Screw	18	IB500W Rotor	34	Male plug
5	Brush cover	19	Brush fixed rack	35	Speed control board
6	Brush	20	Interlocking push bolt	36	Switch osculant staff spring
7	3246 Brush cylinder spring	21	Interlocking push bolt Spring	37	Speed control board
8	Brush rack	22	Switch osculant staff	38	Female plug
9	3*12 CB Screw	23	Switch	39	Lead wire of female plug
10	Rubber interlocking protector	24	Push bolt spring		

BLD200, BLD250, BLD300, BLD350, BLD400, BLD450, BLD500, BLD550 SPARE PARTS LIST

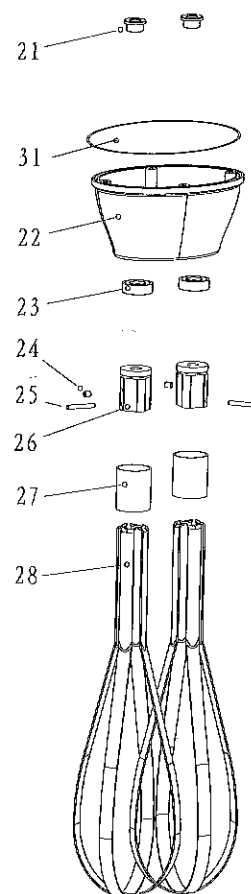
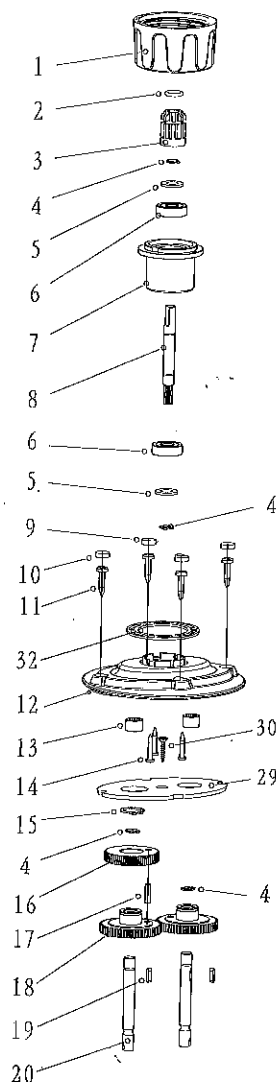
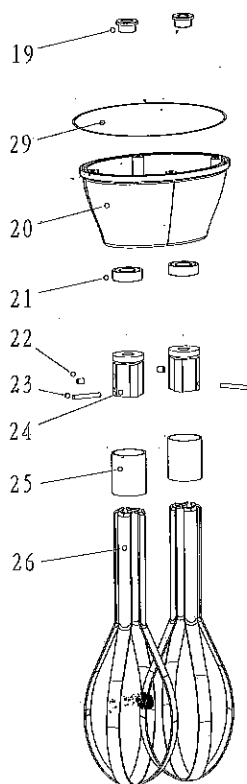
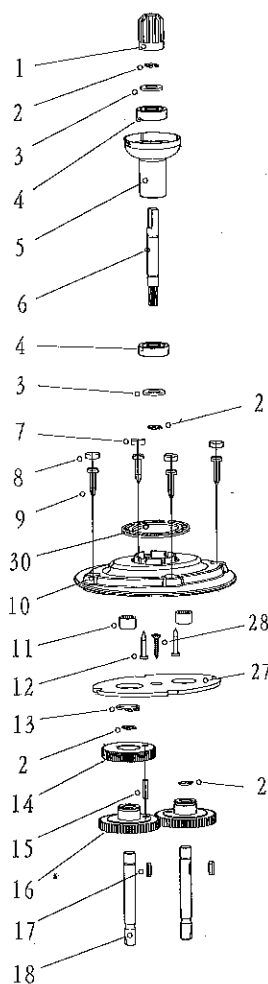
Part No.	Part Name	Part No.	Part Name	Part No.	Part Name
1	Spline sleeve	7	Output axis	13	Graphite ring
2	Spline sleeve seal ring	8	304 S/S tube	14	Graphite ring spring
3	Connect sleeve	9	Bearing sleeve	15	Convex ring
4	connect sleeve seal ring	10	Knife protector	16	Blade
5	Fastening sleeve	11	Ceramic ring sleeve		
6	608 bearing	12	Ceramic ring		

Exploded view
IB750LF / IB750LV



IB750LF / IB750LV parts price list

Part No.	Part Name	Part No.	Part Name	Part No.	Part Name
1	Power cord with tail	13	Rubber interlocking protector	25	Aluminium head
2	Cable sheath	14	Speed control board	26	Left housing
3	Pressing board	15	Switch	27	Screw
4	Pressing board screw	16	Switch osculant staff	28	Screw plunger7
5	Right housing	17	Switch sheath	29	Screw plunger8
6	Rubber push sheath	18	Washer	30	Screw plunger 5
7	Push bolt	19	Motor cover	31	Screw plunger6
8	Push bolt spring	20	Motor gasket	32	Screw plunger4
9	Speed control key	21	Motor	33	Screw
10	Potentiometer	22	Rubber ring	34	Screw plunger1
11	Interlocking push bolt Spring	23	Spline sleeve	35	Screw plunger2
12	Interlocking push bolt	24	Screw	36	Screw plunger3



WIK185 SPARE PARTS LIST

Part No.	Part Name	Part No.	Part Name	Part No.	Part Name	Part No.	Part Name
1	Spline sleeve	9	Housing screw	17	Key	25	Steel ring
2	Φ8 Snap ring	10	Upper cover	18	Output axis	26	Steel bar
3	Bearing washer	11	Needle bearing	19	Shaft sleeve	27	Baffle plate
4	Bearing	12	Screw	20	Lower cover	28	Screw
5	Connect sleeve	13	Φ16 Snap ring	21	Oil sealing	29	Down seal ring
6	Helical gear bearing	14	Helical gear bearing	22	M4x5 Screw	30	Up seal ring
7	Screw plunger 2	15	Cylindrical pin	23	Cylindrical pin		
8	Screw plunger 1	16	Straight gear	24	Fixed board		

WIK250 SPARE PARTS LIST

Part No.	Part Name	Part No.	Part Name	Part No.	Part Name	Part No.	Part Name
1	Fastening sleeve	9	Screw plunger 2	17	Cylindrical pin	25	Cylindrical pin
2	Spline sleeve seal ring	10	Screw plunger 1	18	Straight gear	26	Fixed board
3	Spline sleeve	11	Housing screw	19	Key	27	Steel ring
4	Φ8 Snap ring	12	Upper cover	20	Output axis	28	Steel bar
5	Oil sealing	13	Needle bearing	21	Shaft sleeve	29	Baffle plate
6	Bearing	14	Screw	22	Lower cover	30	Screw
7	Connect sleeve	15	Φ16 Snap ring	23	Oil sealing	31	Down seal ring
8	Helical gear bearing	16	Helical gear bearing	24	M4x5 Screw	32	Up seal ring